

Safety

⚠ DANGER: Fast Amps very strongly recommends the use of an experienced and qualified installer who is aware of the local / national electrical wiring rules, specifically relating to EVs and charging requirements. Fast Amps will not accept liability for damage caused by incorrect installation.

⚠ DANGER: Read these instructions carefully before starting work. A failure to follow the instructions is likely to invalidate the warranty.

⚡ DANGER: The applicable local and national wiring regulations must be adhered to during the installation and commissioning process.

⚠ WARNING: If the Alpha7 charger is damaged in any way: do not use it: contact Fast Amps to arrange a replacement unit.

⚠ CAUTION: Avoid positioning the installation in direct sunlight. Use only cabling suitable for EV installations.

⚡ WARNING: Do not use high-pressure washers to clean the Alpha7 Charger.

⚡ WARNING: Do not fit glands to the top of the product: this is associated with an increased risk of water ingress and potential electric shock.

⚡ WARNING: Do not use charging extensions with this product.

For Declaration of Conformity,
see Online User Manual at

fastamps.com



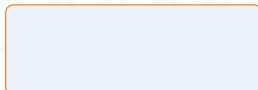
Download the Fast Amps App

- ✓ See Charge Status
- ✓ Start or Stop Charging
- ✓ See Charge History
- ✓ Export Charge Data
- ✓ Set Charge Times
- ✓ Lock Your Charger



Scan to
download
the app

Your Bluetooth Password



**Have a question?
We're here to help:**

☎ 01743 249 900

@ info@fastamps.com

Darwin House, 2 The Mount,
Shrewsbury, Shropshire, SY3 8PU

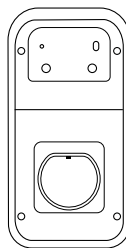
Company Registered in the UK: 13628447

VAT Registration Number: 390 4022 22

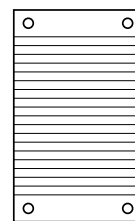


Scan to visit us at
fastamps.com

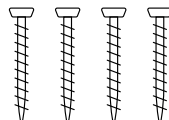
Box Contents



Alpha7 EV Charger



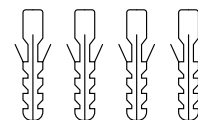
Box Insert:
Mounting Template



4 x 38mm Screws



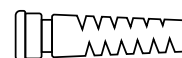
T20 Bit



4 x 40mm Wall Fixings



5m Tether



Spiral Gland

Troubleshooting

For a more in depth overview of the Alpha7 unit
please see our online user manual and FAQs at

fastamps.com

FAST AMPS
SIMPLY RELIABLE

Alpha7

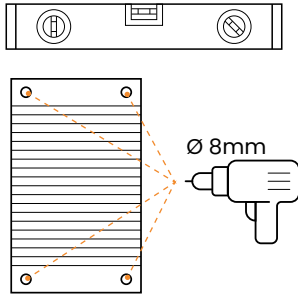
Generation 3

Tethered Quick Guide



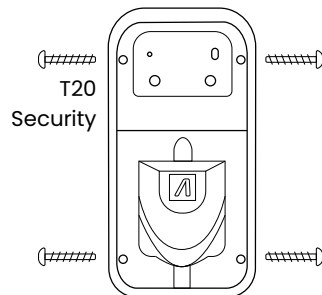
fastamps.com

1. Drill Holes

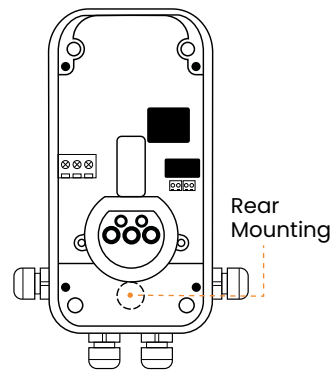


Use Mounting Template
! AVOID DIRECT SUNLIGHT !

2. Fit Glands

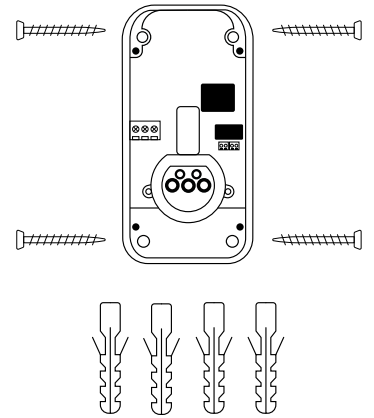


Remove Lid

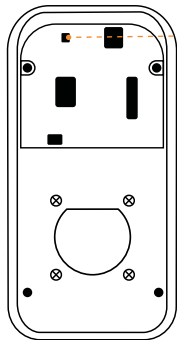


Allowed Drill Hole
Gland Locations

3. Mounting



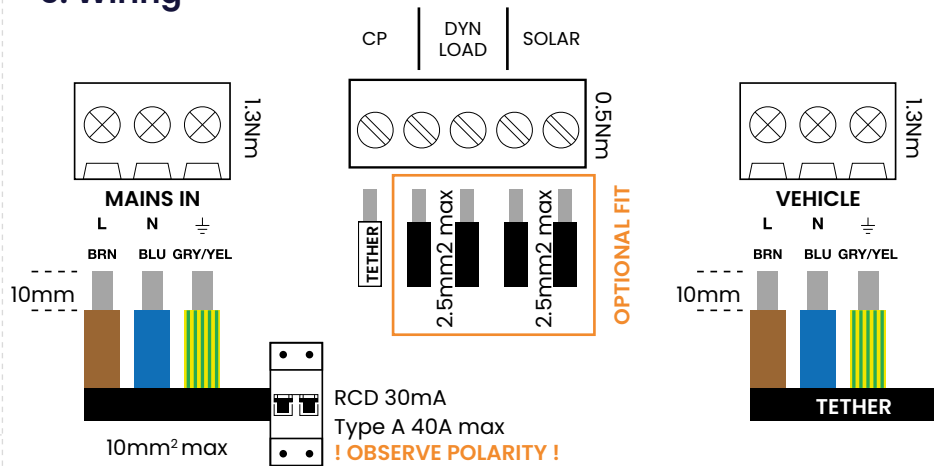
4. Set DIP Switch



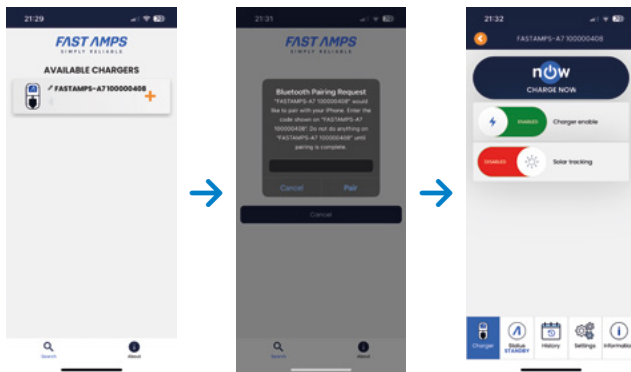
Comms Setting

ON	OFF	1	2	Bluetooth: BLE (Default)
ON	OFF	1	2	WiFi / Ethernet
ON	OFF	1	2	Bluetooth: BLE
ON	OFF	1	2	WiFi with OCPP

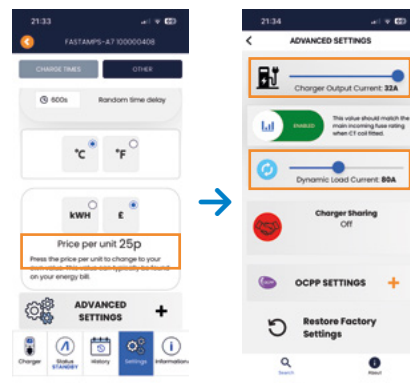
5. Wiring



6. Pair App (Optional)



7. Set Current (optional)



8. Re-assemble

Replace lid screws
(2Nm)
Tighten Gland(s)

Charger Output
Current (Default 32A)
Dynamic Load Current
(Default "OFF")

9. Check

LED Indicator
Colours

Blue	Ready to Charge
Blue Flash	Delay (0-600s/off-peak)
Green	Charging
Green Flash	Finished Charging
Yellow	Over Temperature
Yellow Flash	Lock Open / Close Error
Red	RCD/Relay Fault
Red Flash	Communication Error
Red Pulse	Mains Wiring Error
Red / Blue Flash	Mains Under Voltage
Red / Yellow Flash	Mains Over Voltage
Blue / Yellow Flash	Network Comms Error
Pink Flash	Over-current
White	Clock Error
White Flash	Battery Low
Multi-coloured	App Charger Lock

PRESS THE NOW BUTTON

Green LED = Charging



10. Charge

To begin charging, first unlock the vehicle and connect the cable to the vehicle's charging port then connect the cable to the Alpha7 unit.

If the LED indicator on the Alpha7 unit shows as green the vehicle is charging normally. If the LED is not green please refer to the chart in step 9 to diagnose the issue.

To stop charging, unlock the vehicle and disconnect the cable from the vehicle's charging port then disconnect the cable from the Alpha7 unit.